

HOW DO LEARNING & BRAIN CHALLENGES OCCUR? HOW DOES IA BRAIN INTEGRATION THERAPY WORK?

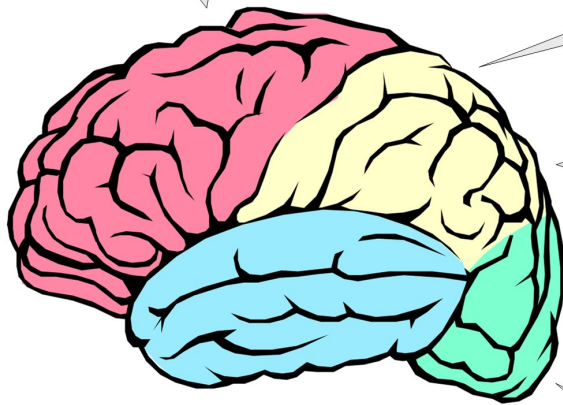
Nancy's clients typically experience a high rate of reduction or resolution of their symptoms unless organic brain damage is involved. The following chart describes how brain disfunctions occur and how IA Brain Integration Therapy can help:

1—SUCCESSFUL BRAIN FUNCTIONING...

is dependent upon the proper "timing and synchronicity" of the brain's information processing. Successful brain functioning requires that the neurological pathways in the brain be **well integrated** so that all sensory inputs and outputs (i.e. brain processing) can take place quickly and accurately.

2—BUT IF THE ROUTING OF INFORMATION THROUGH THE BRAIN'S NEUROLOGICAL PATHWAYS IS SLOWED, BLOCKED OR MISROUTED...

then brain performance suffers. Even if our sight and auditory organs are working correctly, **if our brain's pathways are not properly integrated and free-flowing, then our brain can have a difficult time** with such things as academics, attention, self-control, sensory processing, social relations, spelling, memory, and much more.



3—LOSING ONE'S BRAIN INTEGRATION HAPPENS ...

more frequently than one would hope. That is, as we grow up we may experience incidents of physical and emotional stress/trauma that trigger a shutdown of some of our neurological pathways. Consider, for example, what happens if someone experiences "stage fright": they temporarily lose their brain integration and forget what they were going to say. That's an example of how a "stressor" can generate a problematic short-term brain pathway blockage. **Regrettably, long-term brain pathway blockages can occur as well, usually developing by the age of 5 (perhaps even at birth).**

5—USING BRAIN INTEGRATION TECHNIQUES...

Open Pathways' practitioners can identify and correct **blocked neural brain pathways non-invasively and without drugs** (utilizing an integrated acupressure protocol involving the body's meridian system and direct muscle biofeedback). Popular in many countries around the world, Brain Integration is successfully transforming the lives of many thousands of clients and families every year. Please visit our website or call today for complete details.

4—FORTUNATELY, BLOCKED AND MISROUTED NEURO-PATHWAYS CAN USUALLY BE RESOLVED...

by freeing up and re-synchronizing the timing of specific pathways within the brain. **Then, as the brain's neurological circuitry become "integrated," functionality and proper neuro-pathway timing is restored.** That's when your child will discover they can easily memorize math tables, just as you will find it's easier to remember names, to-do lists, and not get "Brain Fog" during stressful times.

For detailed information and a free consultation contact:

Nancy Evans RN, BSN, CH

Thrive CommUnity Acupuncture

BeWellandThrive.org

970-282-8300

Copyright 2008